

Lineshaft Pumps

Mixed Flow Pumps

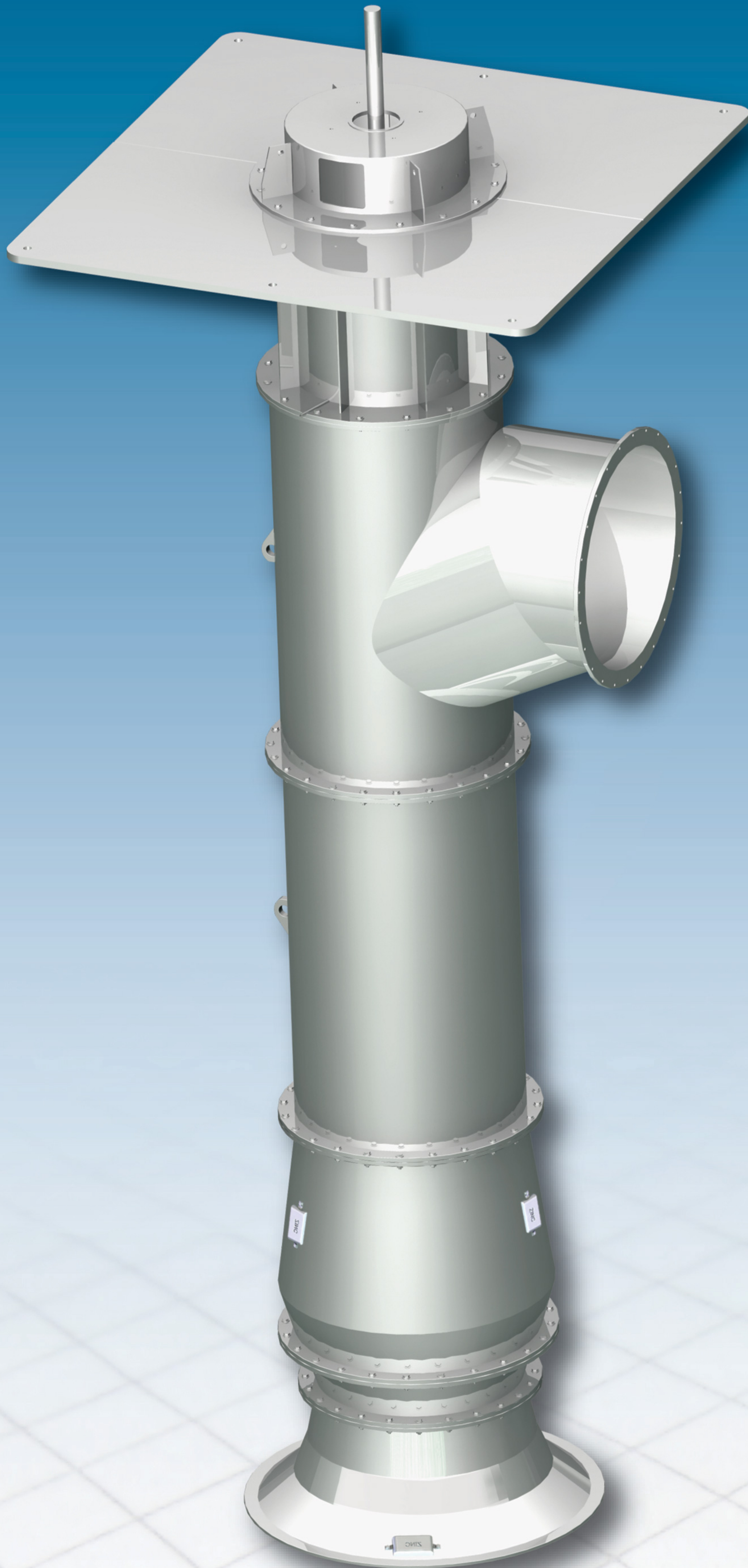
Pump Features:

- Flanged Drive Coupling
- Removable Stuffing Box & Bearing Housing
- Removable Bearing Retainer
- Stainless Steel Line Shaft
- Stainless Steel High-Efficiency Impeller
- Durable Nitrile Rubber Marine Bearings
- Close Tolerance Parallel Machined Flanges
- Stainless Steel Bowl Wear Ring
- Optional Ceramic Coating


MORRISON
PUMP COMPANY

Tel. +1 (954) 922-5880 Fax +1 (954) 922-7729
www.morrisonpump.com

...delivering solutions

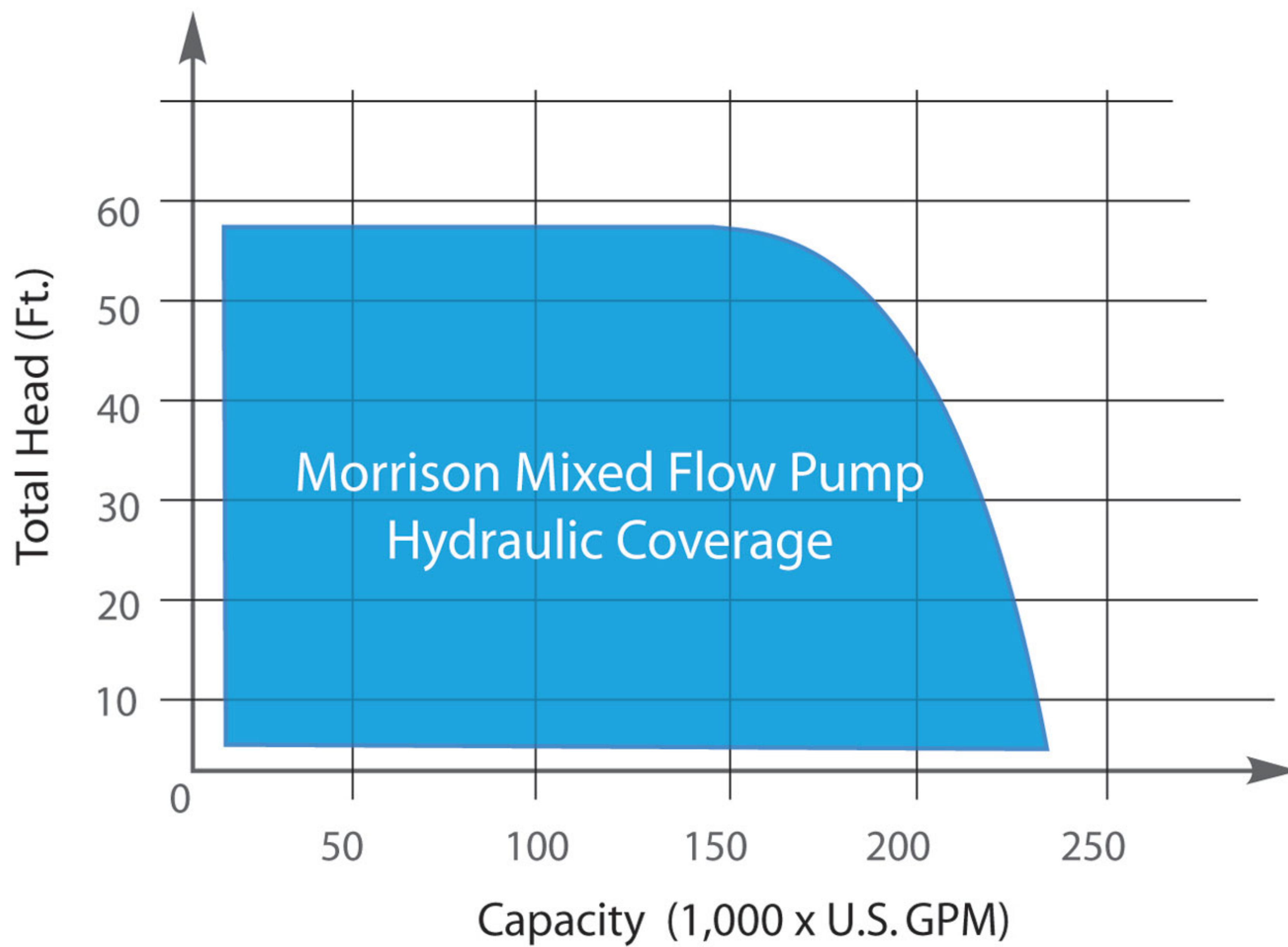


Lineshaft Pumps- Mixed Flow

The High efficiency Morrison Pump Mixed Flow Lineshaft Pump has been engineered and manufactured for severe duty applications and continuous operation.

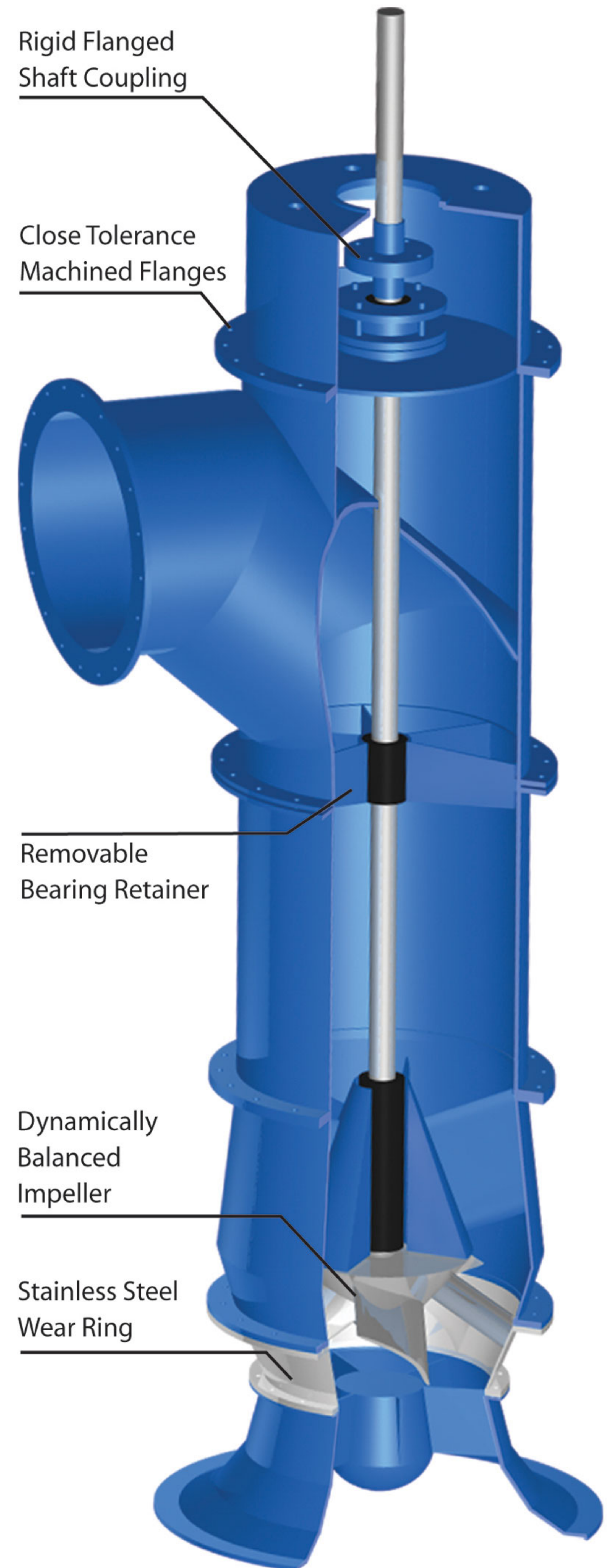
Morrison Mixed Flow Pumps include all standard lineshaft features of our Axial Flow Pumps, including jointed (segmented) pump construction, dynamic balancing of impellers, stainless steel rotating elements and wear rings, flanged drive couplings, electrical isolation of dissimilar metals, removable bearing retainers, and standard marine nitrile rubber radial bearings.

Morrison High-Efficiency Mixed Flow Lineshaft Pumps may be oil, water, or product lubricated (no seals, no oil), with optional features including bearing RTDs, shaft speed sensors, and ceramic coating. Various material options include marine steel, austenitic stainless steel (AISI 316L), duplex stainless steels, and titanium.



Please consult Morrison Pump Company for larger pump sizes. Morrison Axial Flow also available.

PUMP PART	PART DESCRIPTION
Pump Body	Segmented, A36 Carbon Steel
Impeller	Stainless Steel 304L / 316L
Wear Ring	Flanged, Isolated, Stainless Steel 304L / 316L
Lineshaft	Stainless Steel 304L / 316L
Bearings - Product Lube	Marine Nitrile Rubber
Bearings - Oil Lube	Bronze SAE 64
Bearing Retainers	Removable, A36 Carbon Steel
Support Baseplate	Split & Removable, A36 Carbon Steel
Mounting Hardware	Stainless Steel 304 / 316




MORRISON
 PUMP COMPANY

Tel. +1 (954) 922-5880 Fax +1 (954) 922-7729
www.morrisonpump.com

...delivering solutions